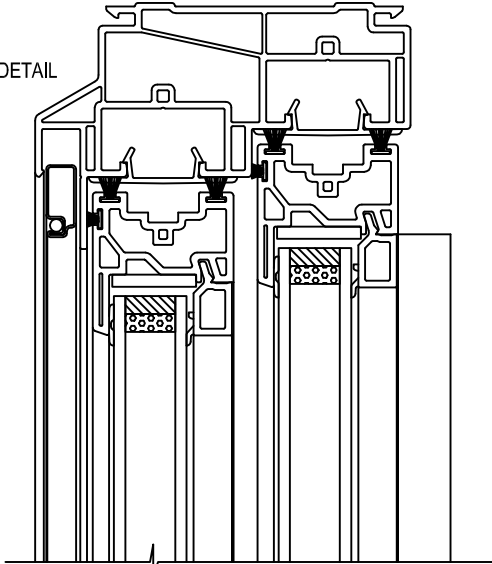
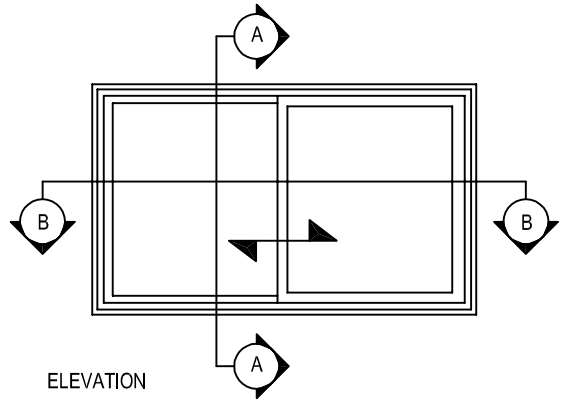


HEAD DETAIL

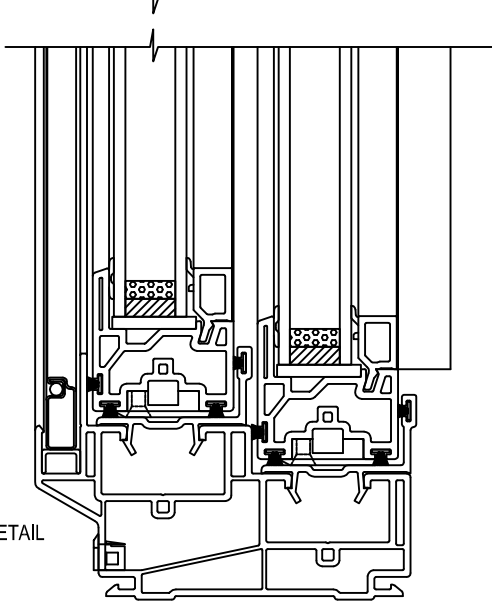


SECTION A - A

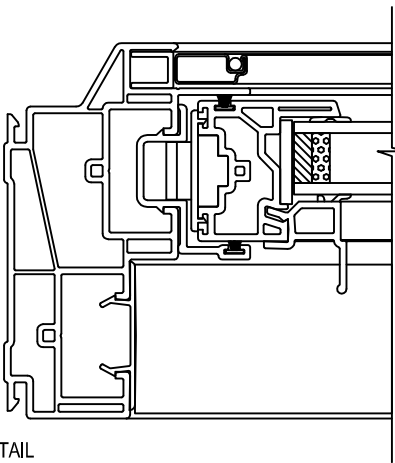


ELEVATION

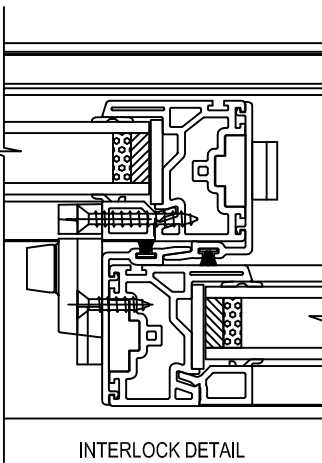
SILL DETAIL



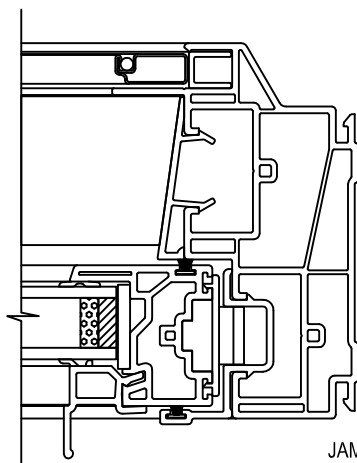
JAMB DETAIL



INTERLOCK DETAIL



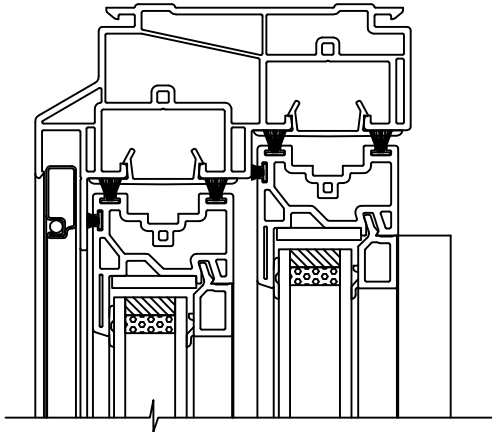
JAMB DETAIL



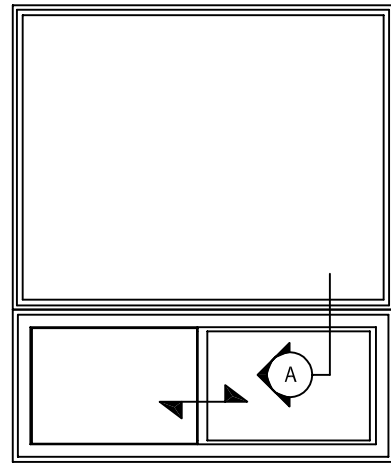
SECTION B - B



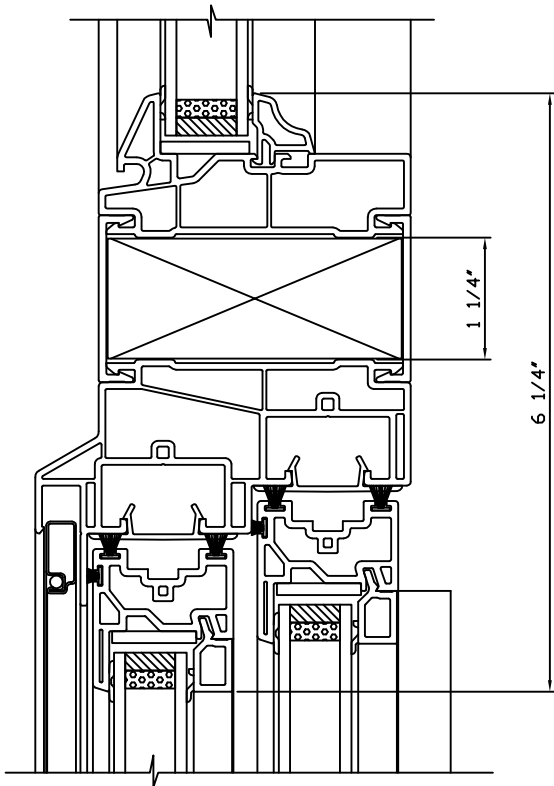
SERIES #1273
DOUBLE SLIDER LIFTOUT
SECTION DETAILS



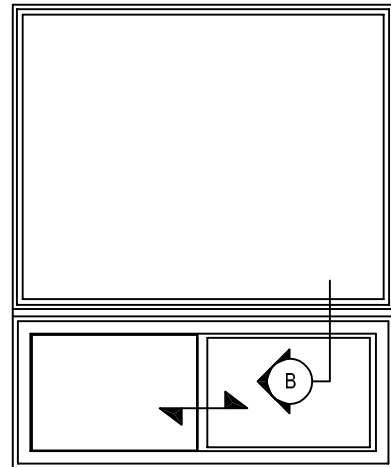
A - FIXED OVER DOUBLE SLIDER LIFTOUT
MULLION DETAIL



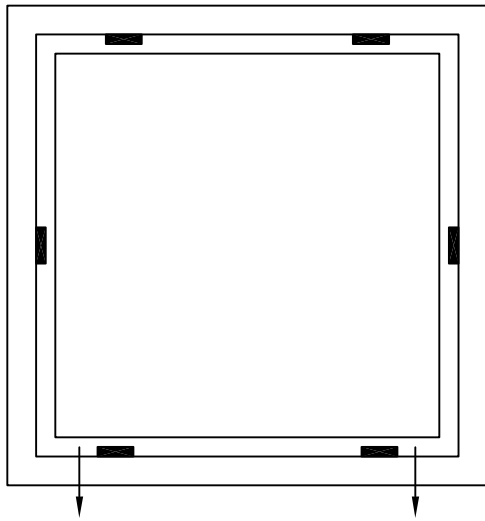
ELEVATION



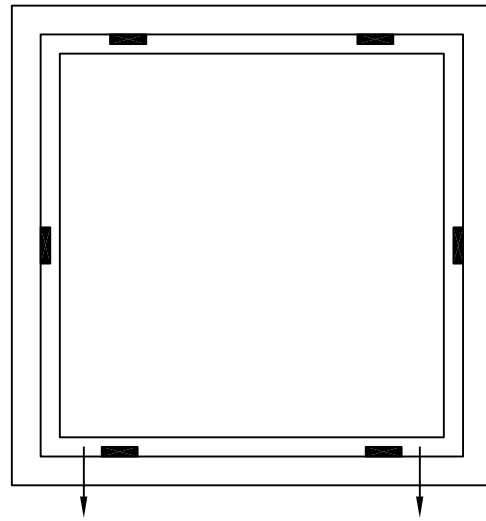
B - FIXED OVER DOUBLE SLIDER LIFTOUT
MULLION REINFORCEMENT DETAIL



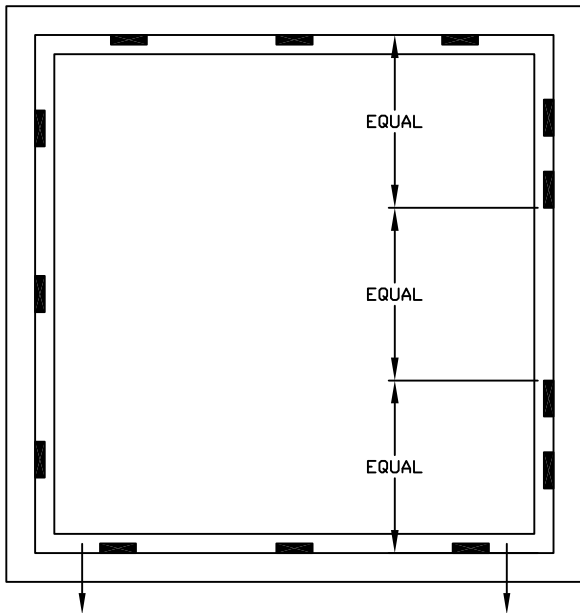
ELEVATION



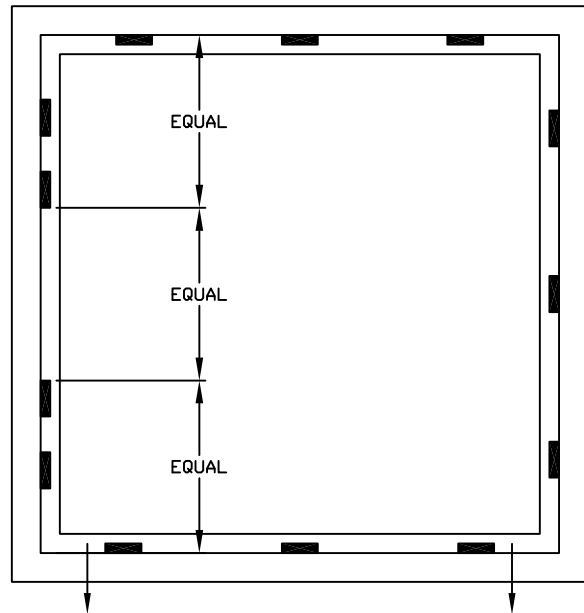
INTERLOCK



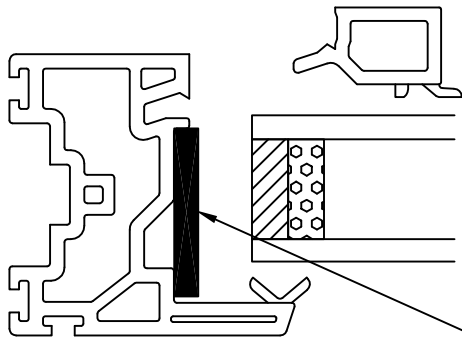
SASH WIDTH OR HEIGHT
23-3/16" OR LESS
(ONE LOCKING POINT)



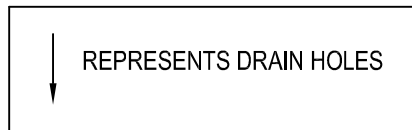
INTERLOCK

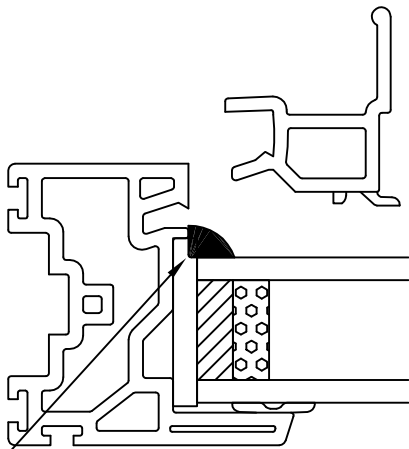
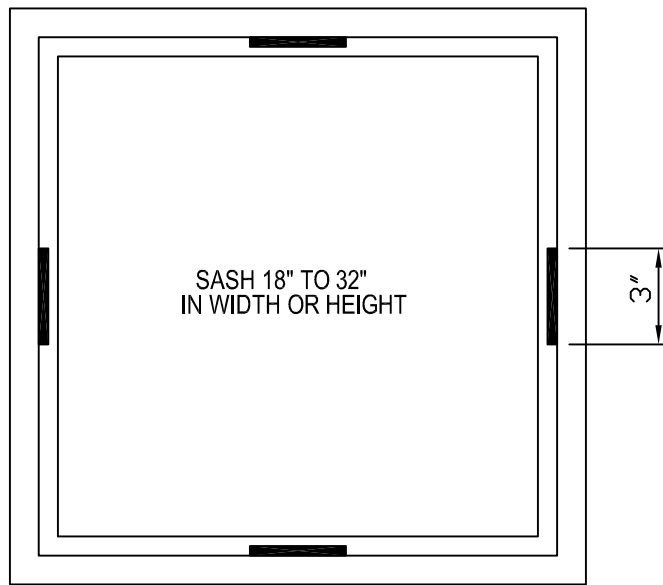
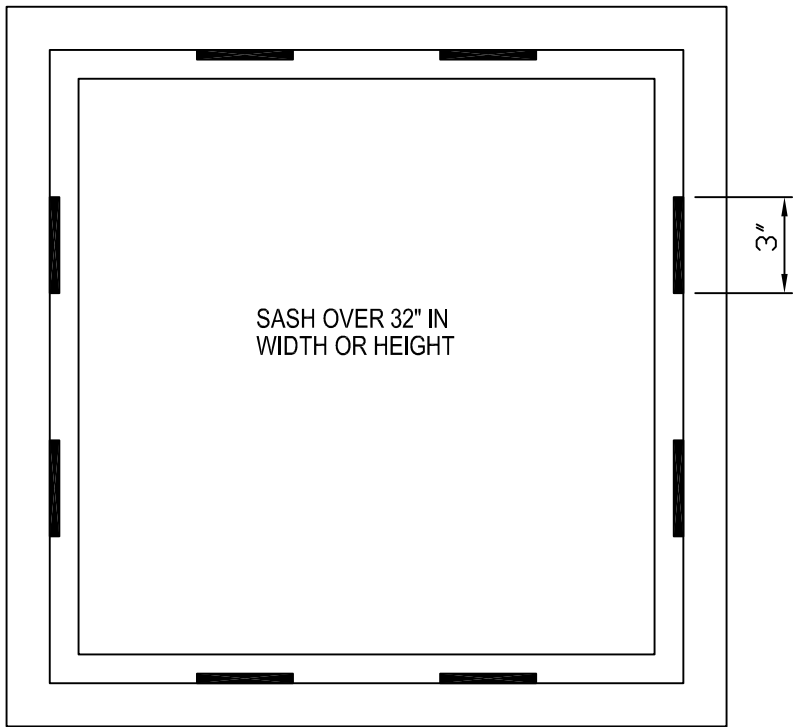


SASH WIDTH OR HEIGHT
23-1/4" OR GREATER
(TWO LOCKING POINTS)

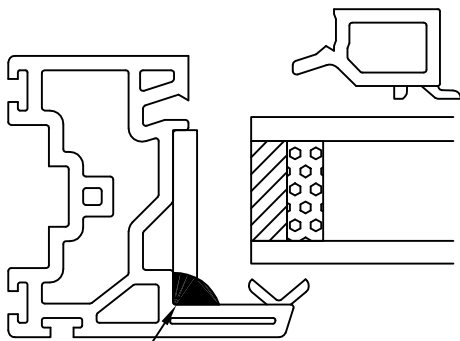


SETTING BLOCK 7/8" x 1-1/4" x 1/8"





SILICONE SASH PULL RAIL, QUARTER POINT TO QUARTER POINT BEAD LENGTH



SILICONE 3" BEAD LENGTH