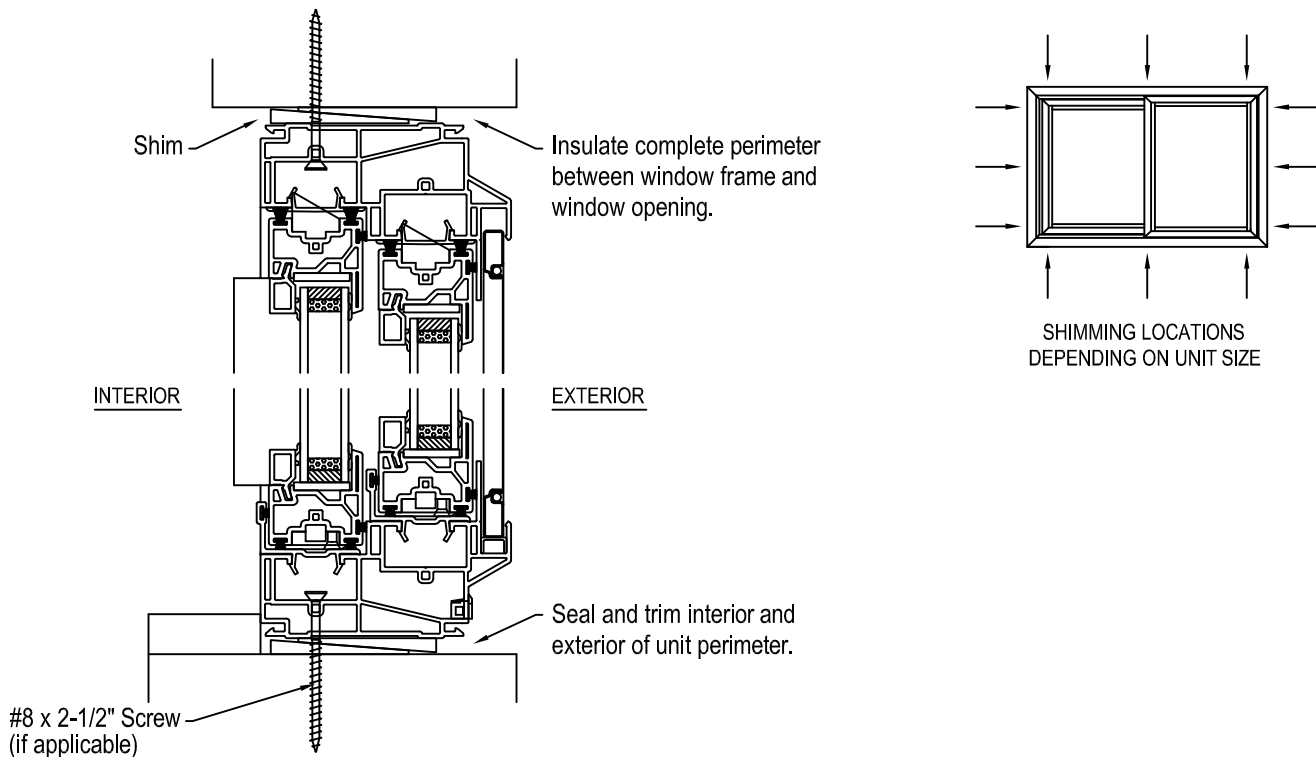


INSTALLATION INSTRUCTIONS

SERIES #1273 DOUBLE SLIDER LIFTOUT WINDOW



- 1.) Do not cut center banding.
- 2.) Check rough opening to ensure that the window unit will fit. Rough opening should be 1/4" to 1/2" larger than the window, both horizontally and vertically.
- 3.) Place window in opening.
- 4.) Unlock window, and slide sashes to center.
- 5.) Locate side jamb covers (snap in covers, with weatherstripping on left side jamb, and flat pocket cover on right side jamb of window) and remove them by inserting a sharp chisel and prying.
- 6.) Shim side jamb frame members 4" from top and bottom and approximately 16" intervals. Shims should be firm but not tight enough to cause the jambs to bow. Check level, plumb, and squareness of frame and adjust shims if necessary.
- 7.) Install screws through pockets of the frame where jamb covers were removed, at each shim location, being careful not to bow frame. Suggest using #8 x 2-1/2" screws. Screw length is dependent upon frame structure, screw length must be of sufficient length to securely anchor unit in opening.
- 8.) Close sashes and lock window.
- 9.) Shim frame sill and head members at center until frame members are level. Place additional shims 4" from each end and at 16" intervals. To ensure a proper seal the gap between sash and frame should be the same at the midpoint as at either end.
- 10.) Cut and remove center banding.
- 11.) Remove interior sash.
- 12.) In exposed head track, fasten screws through frame at approximately 16" centers.
- 13.) If necessary (units larger than 24") remove interior sill cover (snap in cover with weatherstripping), by prying with a sharp chisel, and then fasten screws through sill pocket.
- 14.) **IMPORTANT:** When anchoring unit through sill, place screws at shim locations and seal screw heads with "GE 2800" silicone or equivalent.
- 15.) Snap interior sill cover back into frame.
- 16.) Snap side jamb covers back into appropriate frame members.
- 17.) Put interior sash back into frame and check that the gap between sash and frame remain constant over the entire width of the window. The window unit can be readjusted by loosening the screws, leveling, shimming and re-tightening them as required.
- 18.) Insulate between the window frame and the rough opening, ensuring all voids are filled. Caution must be exercised not to over pack the insulation causing unit frame to distort.
- 19.) Seal and trim window inside and out to suit application