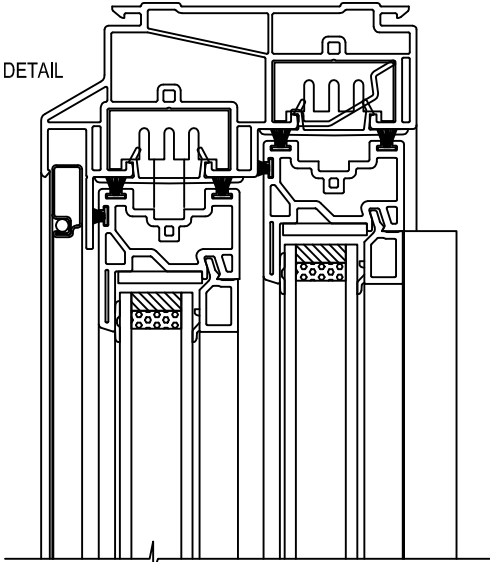
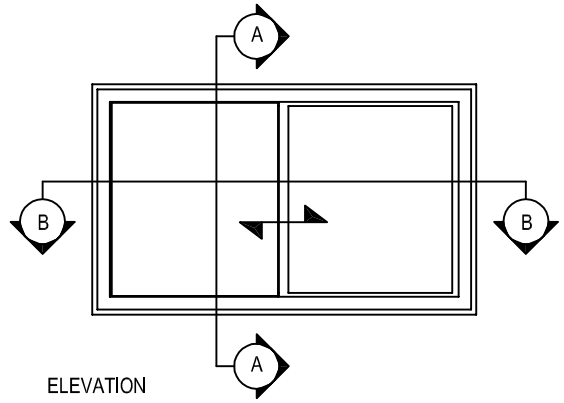


HEAD DETAIL

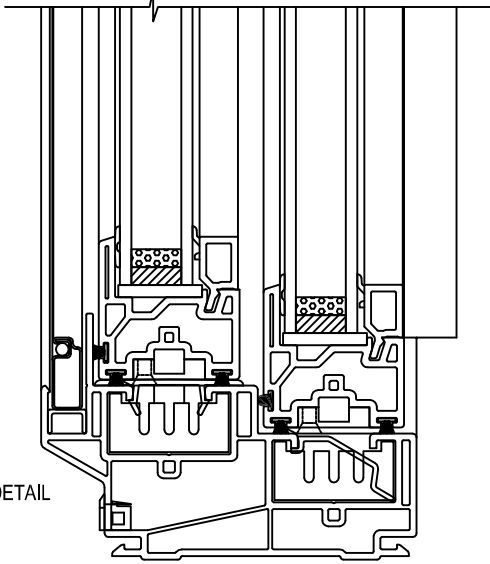


SECTION A - A

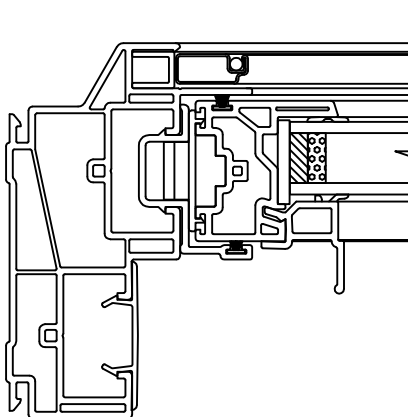


ELEVATION

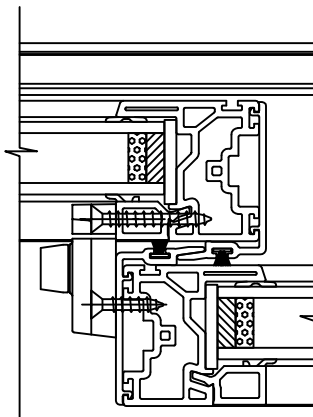
SILL DETAIL



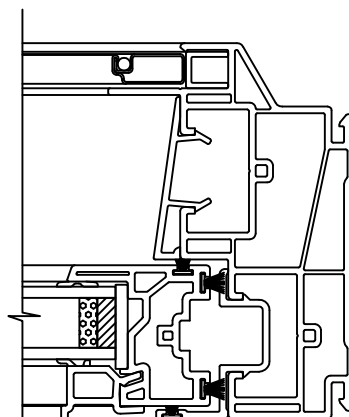
JAMB DETAIL



INTERLOCK DETAIL



JAMB DETAIL

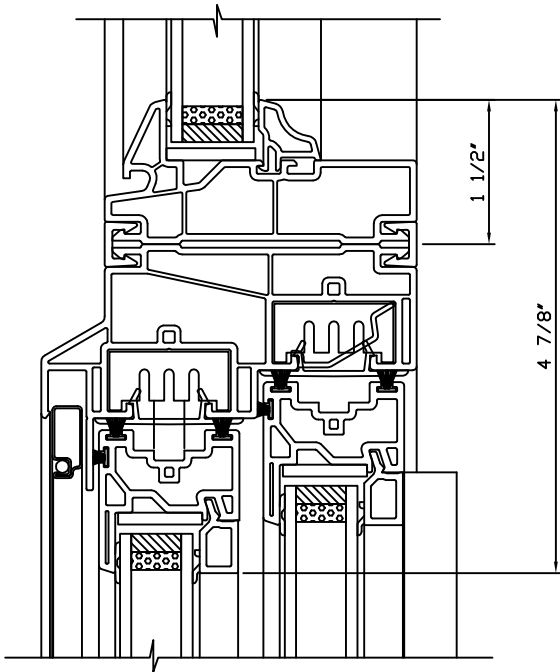


SECTION B - B

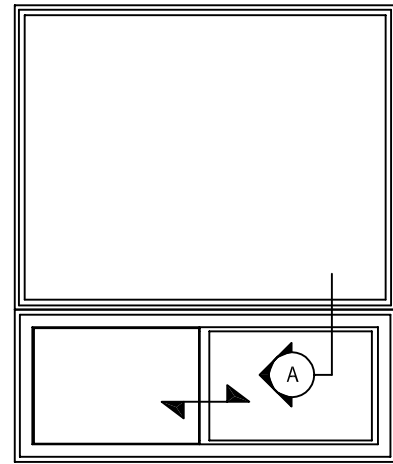


NORTH STAR
VINYL WINDOWS AND DOORS

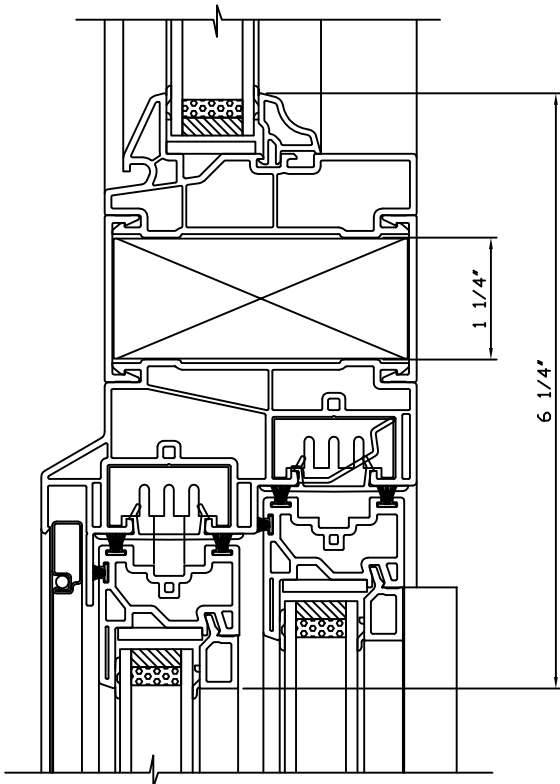
SERIES #1272
DOUBLE SLIDER TILT
SECTION DETAILS



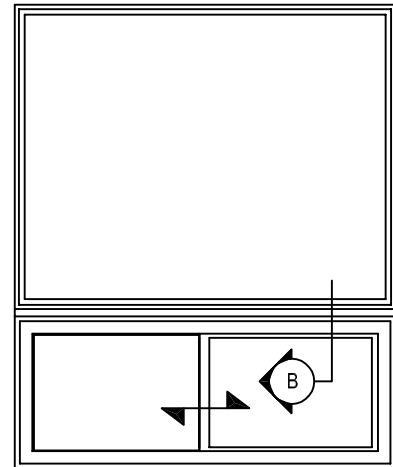
A - FIXED OVER DOUBLE SLIDER TILT
MULLION DETAIL



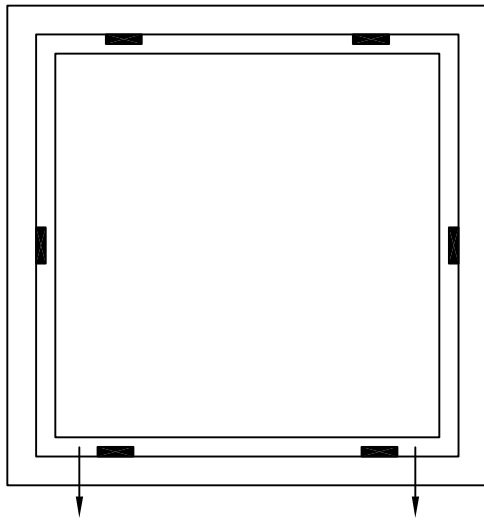
ELEVATION



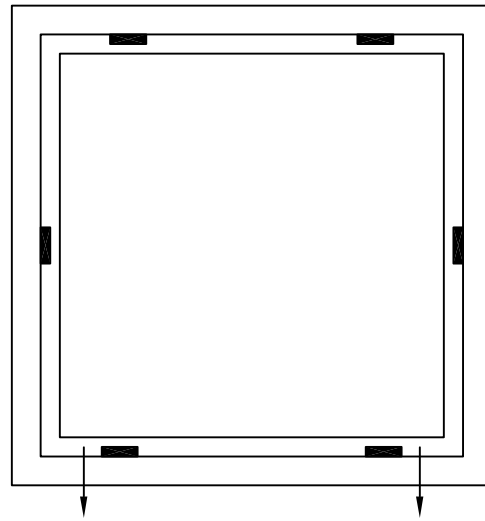
B - FIXED OVER DOUBLE SLIDER TILT
MULLION REINFORCEMENT DETAIL



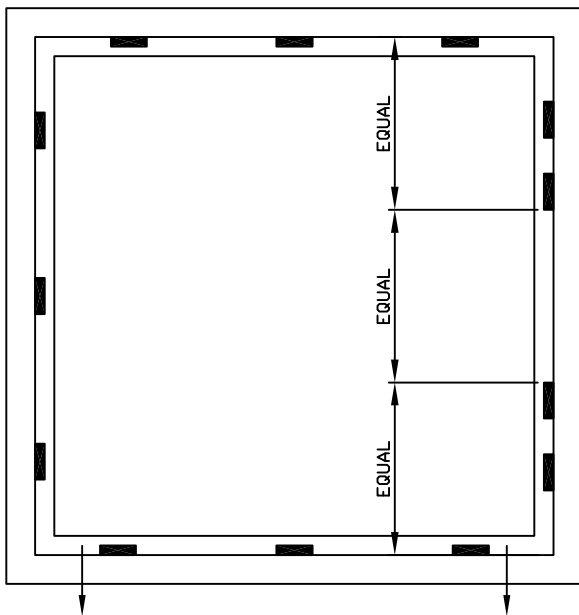
ELEVATION



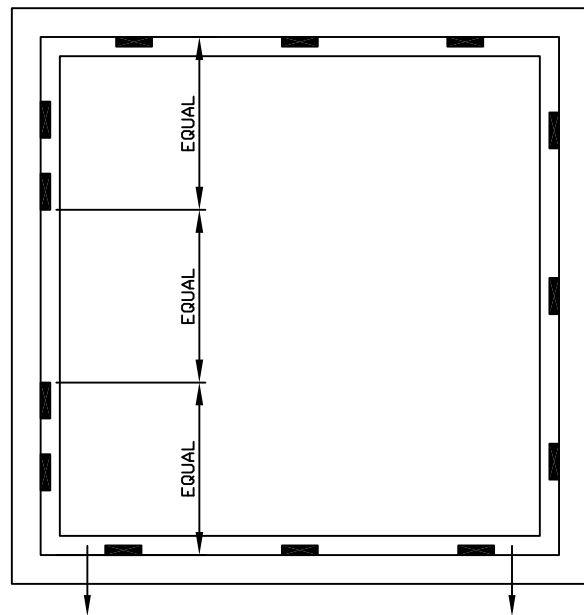
INTERLOCK



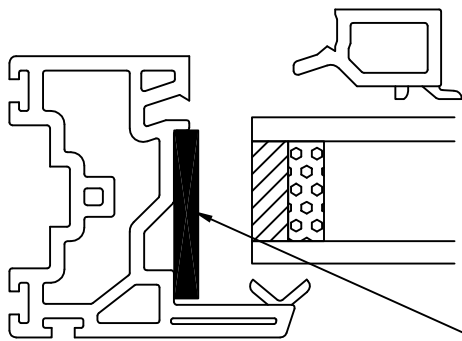
SASH WIDTH OR HEIGHT
23-3/16" OR LESS
(ONE LOCKING POINT)



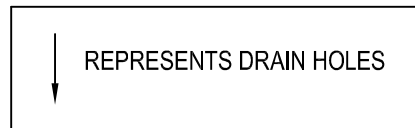
INTERLOCK

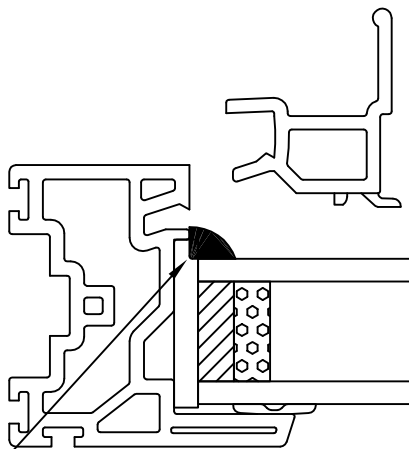
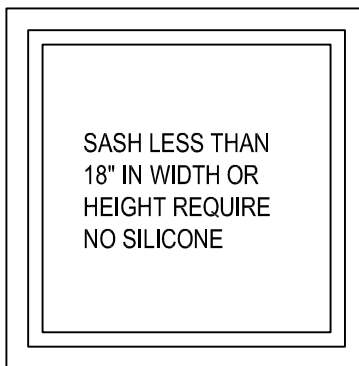
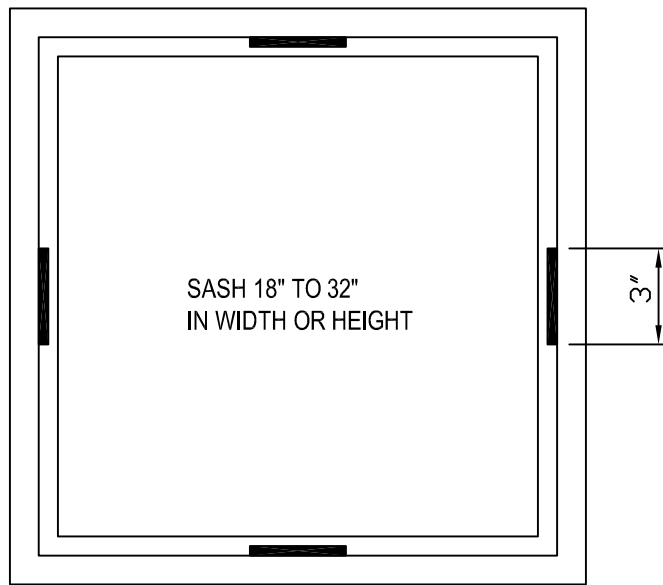
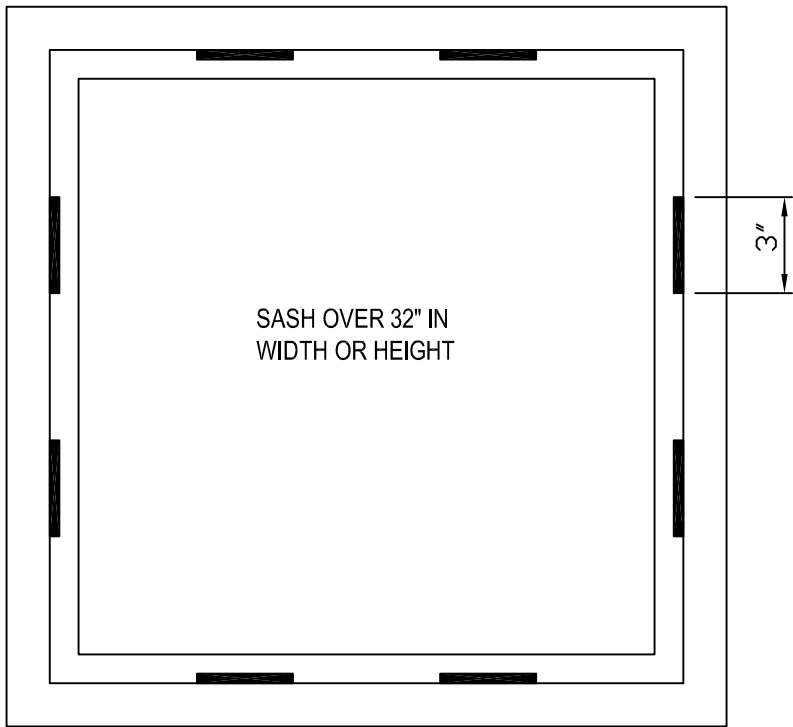


SASH WIDTH OR HEIGHT
23-1/4" OR GREATER
(TWO LOCKING POINTS)

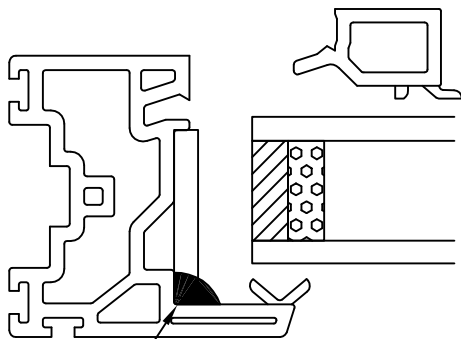


SETTING BLOCK 7/8" x 1-1/4" x 1/8"





SILICONE SASH PULL RAIL, QUARTER POINT TO QUARTER POINT BEAD LENGTH



SILICONE 3" BEAD LENGTH